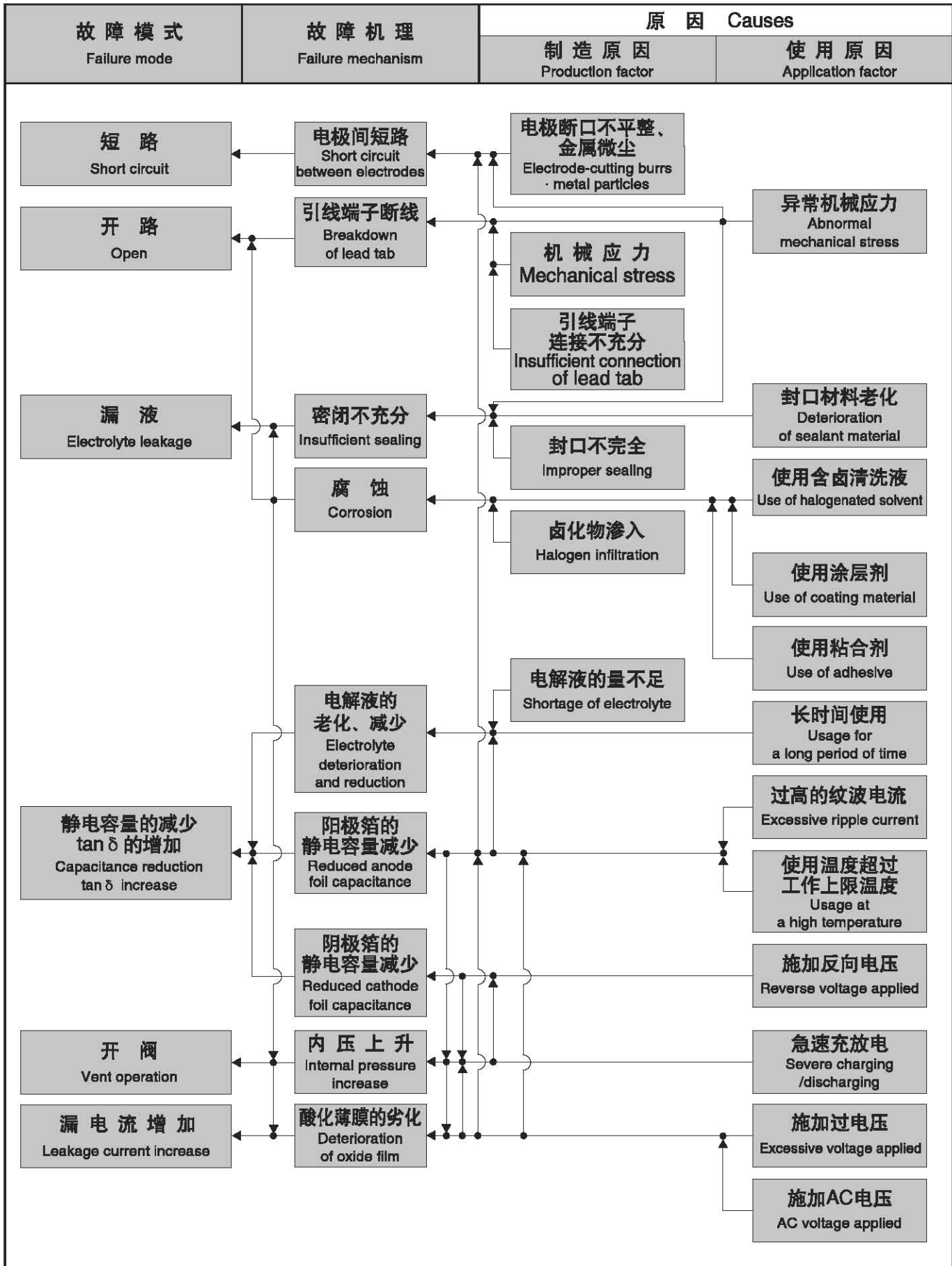


### ◆典型故障模式及其主要原因 / Typical failure modes and their factors



VCHIP  
 GENERAL PURPOSE  
 LOW PROFILE  
 LONG LIFE  
 LOW IMPEDANCE  
 LOW LEAKAGE CURRENT  
 BI-POLAR  
 FOR SWITCHING POWER SUPPLY  
 SNAP-IN TYPE  
 LUG TERMINAL TYPE  
 SCREW TERMINAL TYPE  
 PHOTO FLASH  
 HIGH RIPPLE FARAD